



LMC JacketsTM

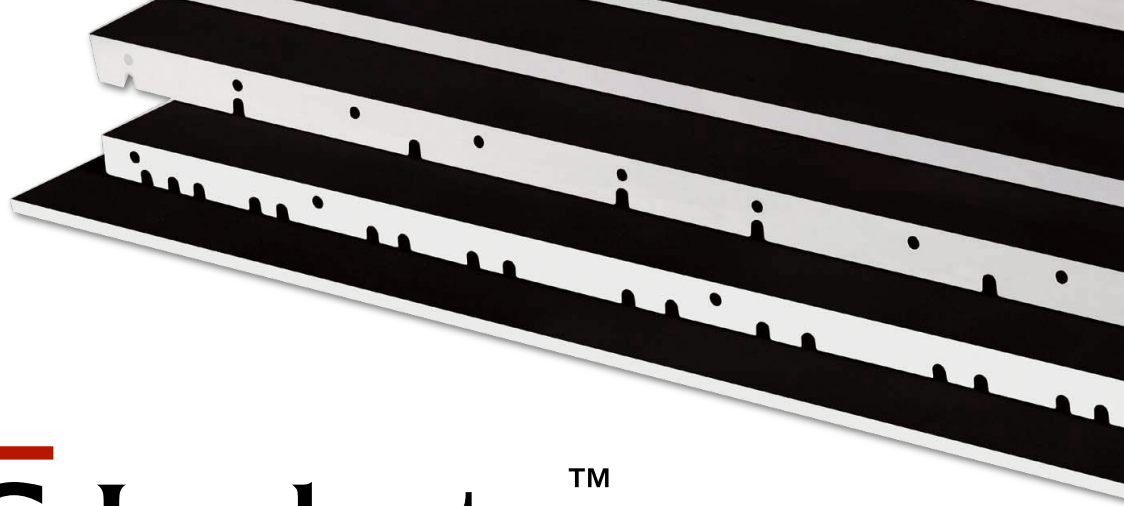
For Transfer & Impression Cylinder
2018

Blueprint
UK LTD 

+44 1375 679700

sales@blueprintuk.com

www.blueprintuk.com



LMC Jackets™

For Transfer & Impression Cylinder

The Quality Alternative to OEM Jackets

These steel jackets are topped with a Liquefied Metal Coating (LMC™) on ceramic base for optimum ink repellency and durability.

A complete range of steel substrate thicknesses are available to meet the requirements and specifications of almost every perfecting press make and model. Jacket fixtures and fittings also vary for perfect fit onto the cylinder.

LMC Jackets are guaranteed for +36 million impressions, showcasing their outstanding durability. This is supported by a high resistance to solvents and heat.

LMC jackets are also easily cleaned manually or automatically with commercially available washing agents.

Blueprint UK have successfully installed 1,800 LMC Jackets Worldwide since 2012

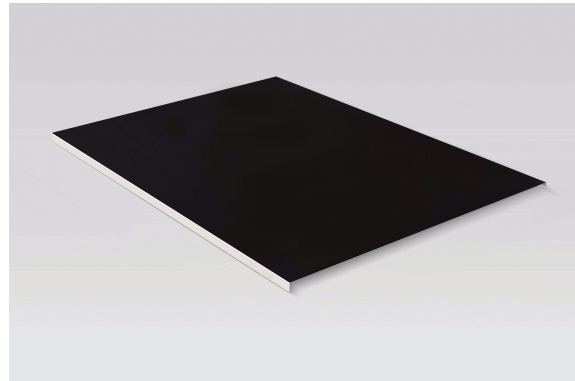
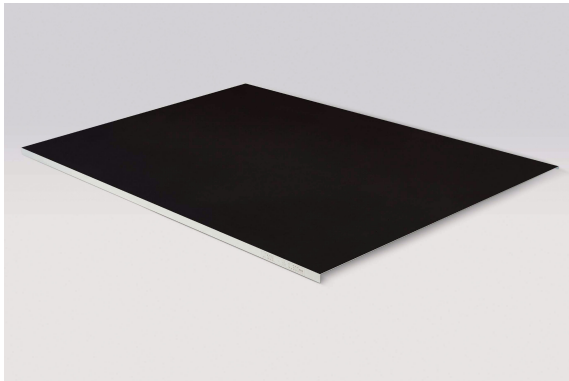
- Page 3 Heidelberg
- Page 6 Komori
- Page 8 Akiyama, KBA, ManRoland, Mitsubishi
- Page 9 Ryobi, Shinohara

Free Shipping in UK • Free Shipping in EU for 5+ Jackets
All jackets must be installed by an approved engineer.



Heidelberg

★ Top Seller



Impression Cylinder

Blueprint Code	Model	Thickness	Base S/S	Manufacturer Part No.
LMC-HA255	SM102	0.251-0.255	0.22	S8.581.184.N
LMC-HA260	SM102	0.256-0.260	0.22	S8.581.185.N
LMC-HA265	SM102	0.261-0.265	0.22	S8.581.186.N
LMC-HA270	SM102	0.265-0.270	0.22	S8.581.187.N
LMC-HA290	SM102	0.285-0.290	0.25	S9.581.183.N
LMC-HA300	SM102	0.296-0.300	0.25	S9.581.184.N
★ LMC-HA305	SM102	0.301-0.305	0.25	S9.581.185.N
★ LMC-HA310	SM102	0.306-0.310	0.25	S9.581.186.N
★ LMC-HA315	SM102	0.311-0.315	0.25	S9.581.187.N
LMC-HA340	SM102	0.320-0.340	0.25	SA.581.183.N
LMC-H74-300	SM74	0.296-0.300	0.25	M2.581.184.N
LMC-H74-305	SM74	0.301-0.305	0.25	M2.581.185.N
LMC-H74-310	SM74	0.306-0.310	0.25	M2.581.186.N
LMC-H74-315	SM74	0.311-0.315	0.25	M2.581.187.N
LMC-H52-300	SM52	0.296-0.300	0.25	G2.581.184.N
LMC-H52-305	SM52	0.301-0.305	0.25	G2.581.185.N
LMC-H52-310	SM52	0.306-0.310	0.25	G2.581.186.N
LMC-H52-315	SM52	0.311-0.315	0.25	G2.581.187.N

Heidelberg

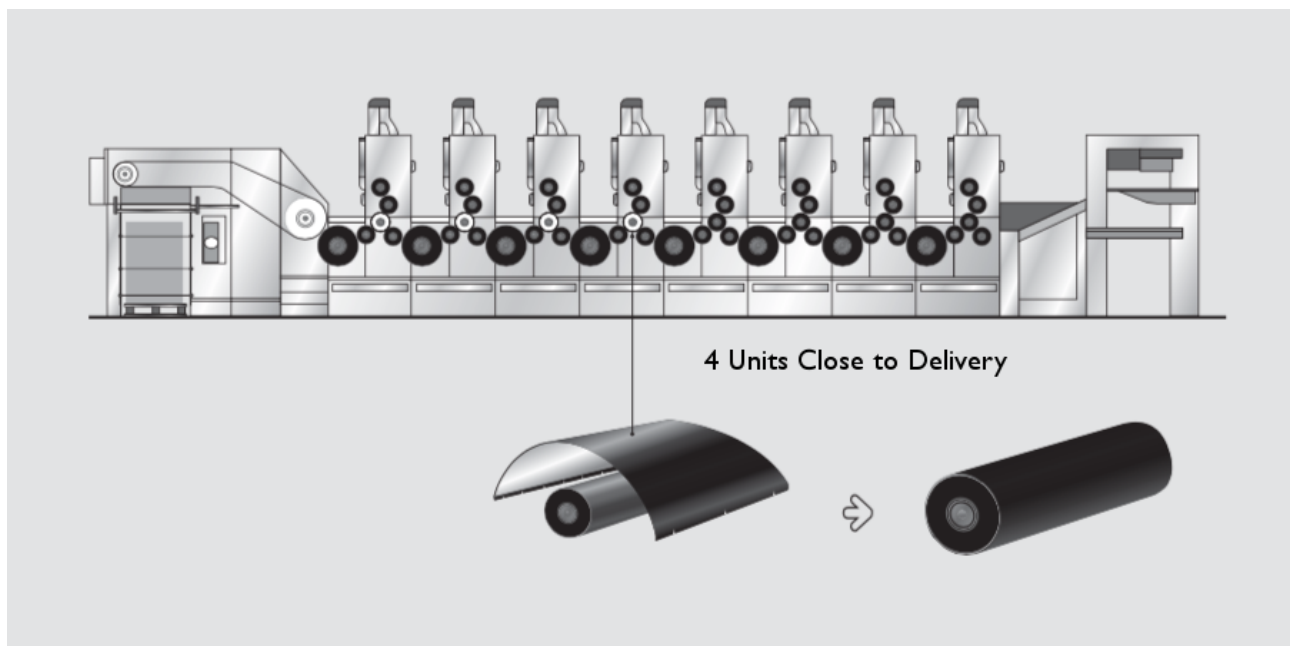
★ Top Seller

Impression Cylinder

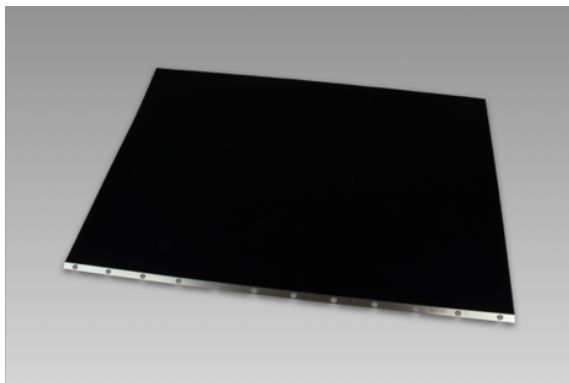
Bluprint Code	Model	Thickness	Base S/S	Manufacturer Part No.
LMC-HXE300	XL106	0.296-0.300	0.25	F4.581.184.N
LMC-HXE305	XL106	0.301-0.305	0.25	F4.581.185.N
LMC-HXE310	XL106	0.306-0.310	0.25	F4.581.186.N
LMC-HXE315	XL106	0.311-0.315	0.25	F4.581.187.N
★ LMC-HX300	XL105	0.296-0.300	0.25	F2.581.184.N
★ LMC-HX305	XL105	0.301-0.305	0.25	F2.581.185.N
LMC-HX310	XL105	0.306-0.310	0.25	F2.581.186.N
LMC-HX315	XL105	0.311-0.315	0.25	F2.581.187.N
LMC-HX75-300	XL75/CD74	0.296-0.300	0.25	L2.581.184.N
★ LMC-HX75-305	XL75/CD74	0.301-0.305	0.25	L2.581.185.N
LMC-HX75-310	XL75/CD74	0.306-0.310	0.25	L2.581.186.N
★ LMC-HX75-315	XL75/CD74	0.311-0.315	0.25	L2.581.187.N

Install Example

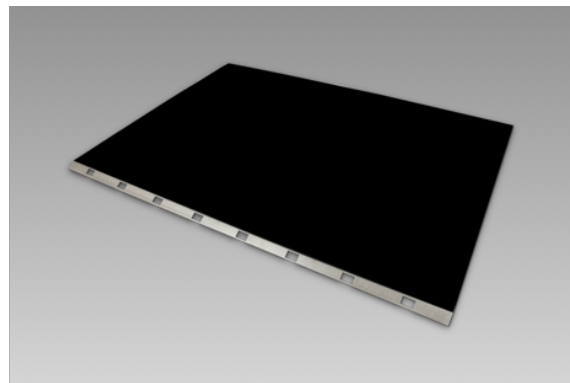
SM102 Impression Jackets



Heidelberg



LMC-SX102T



LMC-H74T

Transfer Cylinder

Blueprint Code	Model	Thickness	Manufacturer Part No.
LMC-HXE-LTT	XL106	0.300-0.305	
LMC-HX-LTT	XL105	0.300-0.305	F3.215.201.N
★ LMC-HAT-R	SM102	0.300-0.305	S8.215.201.N
LMC-SX102T	SX102	0.300-0.305	TC.215.105.N
LMC-HX75-TB	XL75/CD74	0.300-0.305	L2.583.105.N
LMC-HX75-TT	XL75/CD74	0.300-0.305	L8.215.105.N
★ LMC-H74T	SM74	0.300-0.305	M2.215.105.N
LMC-SX74T	SX74	0.300-0.305	D2.215.105.N
★ LMC-H52T	SM52	0.300-0.305	G2.215.105.N
LMC-SX52T	SX52	0.300-0.305	G6.215.105.N



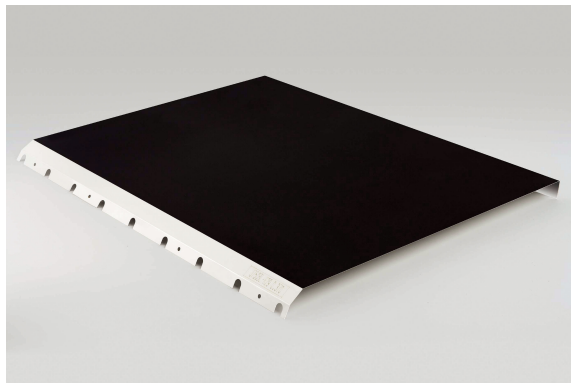
We converted from OEM jackets to LMC and have never had any issues. Blueprint UK's specialised engineers installed them and they've now reached 70 million impressions.

Richard Toplis, Works Manager, Stirland Paterson Ltd

Jackets Installed on Heidelberg XL75 (10 Col)

Komori

★ Top Seller

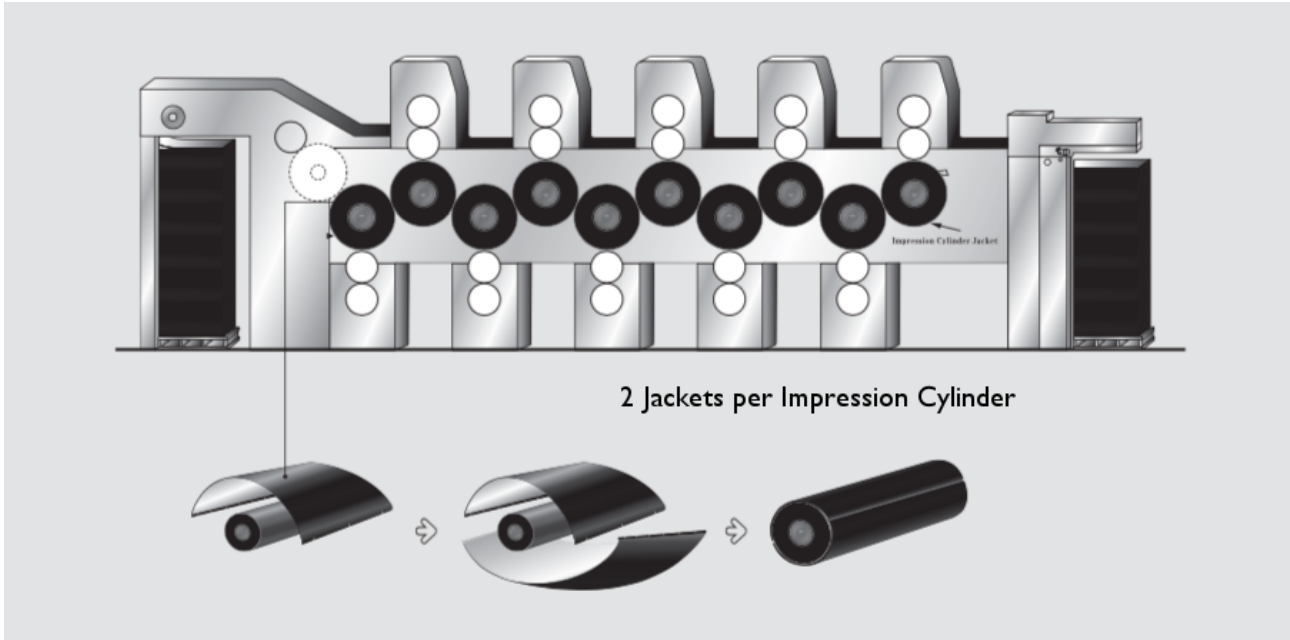


Blueprint Code	Model	Thickness	Base S/S	Manufacturer Part No.	Notes
★ LMC-KAT2K	L40SP	0.411-0.420	0.30	742.3202.401	Upper
★ LMC-KAB2	L40SP	0.411-0.420	0.30	742.3251.301	Lower
LMC-700-KATK	L40SP	0.300	0.30	742.3202.500	Plain Steel
LMC-KATK	L40SP	0.411-0.420	0.35	742.3202.403	Upper
LMC-KAB	L40SP	0.411-0.420	0.35	742.3251.303	Lower
LMC-700-KATK	L40SP	0.300	0.30	742.3202.500	Plain Steel
★ LMC-KSAT2K	LS40SP	0.411-0.420	0.30	GFH.3200.201	Upper
LMC-KSAB2	LS40SP	0.411-0.420	0.30	714.3250.600	Lower
LMC-700-KSAT	LS40SP	0.300	0.30	714.3200.800	Plain Steel
LMC-KATK	LS40SP	0.411-0.420	0.35	GFH.3200.201	Upper
LMC-KAB	LS40SP	0.411-0.420	0.35	714.3250.600	Lower
LMC-700-KATK	LS40SP	0.300	0.30	714.3200.800	Plain Steel
LMC-KAT2K	L40P	0.411-0.420	0.30	IGS.3234.112	10 Holes
LMC-KAXX	L40P	0.300	0.30	IGS.3234.022	Etch Lined
LMC-KSAT2K	LS40P	0.411-0.420	0.30	GFH.3200.201	10 Holes
LMC-K26P	L26P	0.365-0.370	0.30	SFU.3305.202	
LMC-700-K26P	L26P	0.300	0.30	SFU.3202.200	Plain Steel
LMC-K28P	L28P	0.365-0.370	0.30	SFV.3303.200	
LMC-K28PXX	L28P	0.300	0.30	SFV.3202.201	Etch Lined
LMC-KLS29P	LS29P	0.360-0.380	0.30	834.3200.301	
LMC-K29P	SPICA 29	0.411-0.420	0.35	345.3500.803	

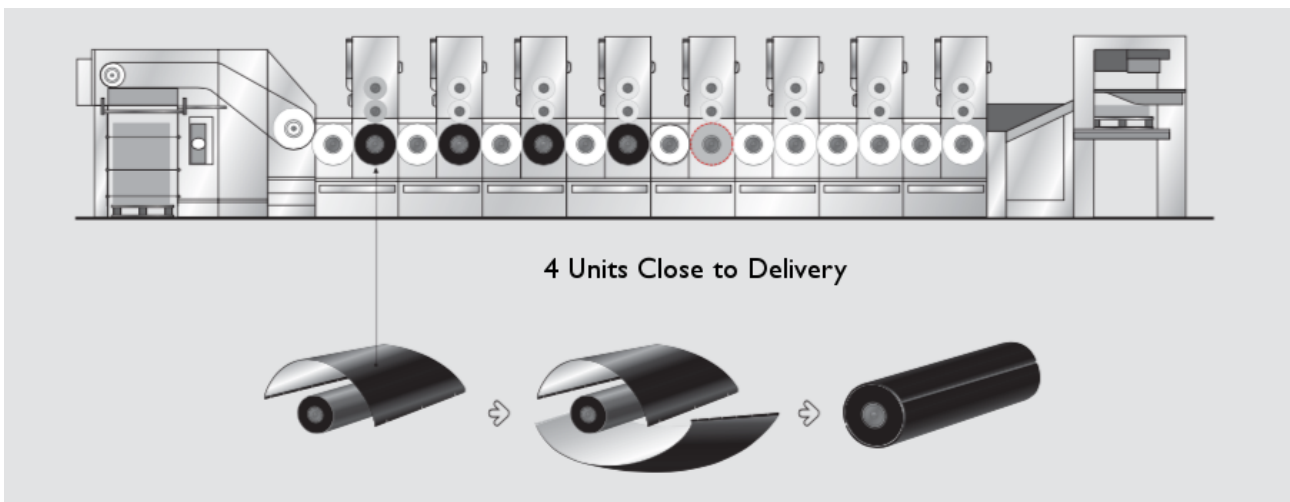
Komori

Install Example

L40SP & LS40SP Impression Jackets



L40P & LS40P Impression Jackets



“LMC Jackets have performed very well on our Komori presses. They’re just as good, if not better, than OEM jackets - and we’ve saved money.”

Gary Lees, Operations Manager (Print Room), Wyndeham Grange

Jackets Installed on Komori SP40 (8 Col) & Komori SP540 (10 Col)

Other Models



Akiyama



Mitsubishi

Akiyama

Blueprint Code	Model	Thickness	Base S/S
LMC-AAAI	JP40	0.365-0.370	0.30

KBA

LMC-KBA05	105	0.300-0.305	0.25
LMC-KBA06	106	0.300-0.305	0.25

ManRoland

LMC-RA701	700	0.301-0.305	0.25
LMC-RRA	Rekord	0.301-0.305	0.25

Mitsubishi

LMC-MADR	D3000	0.306-0.315	0.25
LMC-MATP-A	TP D3000 (Width 1045mm)	0.306-0.315	0.25
LMC-MATP-B	TP D3000 (Width 1050mm)	0.306-0.315	0.25

Ryobi

Blueprint Code	Model	Thickness	Base S/S
LMC-RB520	520	0.310-0.320	0.25
LMC-RB750	750	0.310-0.320	0.25
LMC-RB780	780	0.310-0.320	0.25
LMC-RB920	920	0.310-0.320	0.25
LMC-RBA	1050	0.310-0.320	0.25

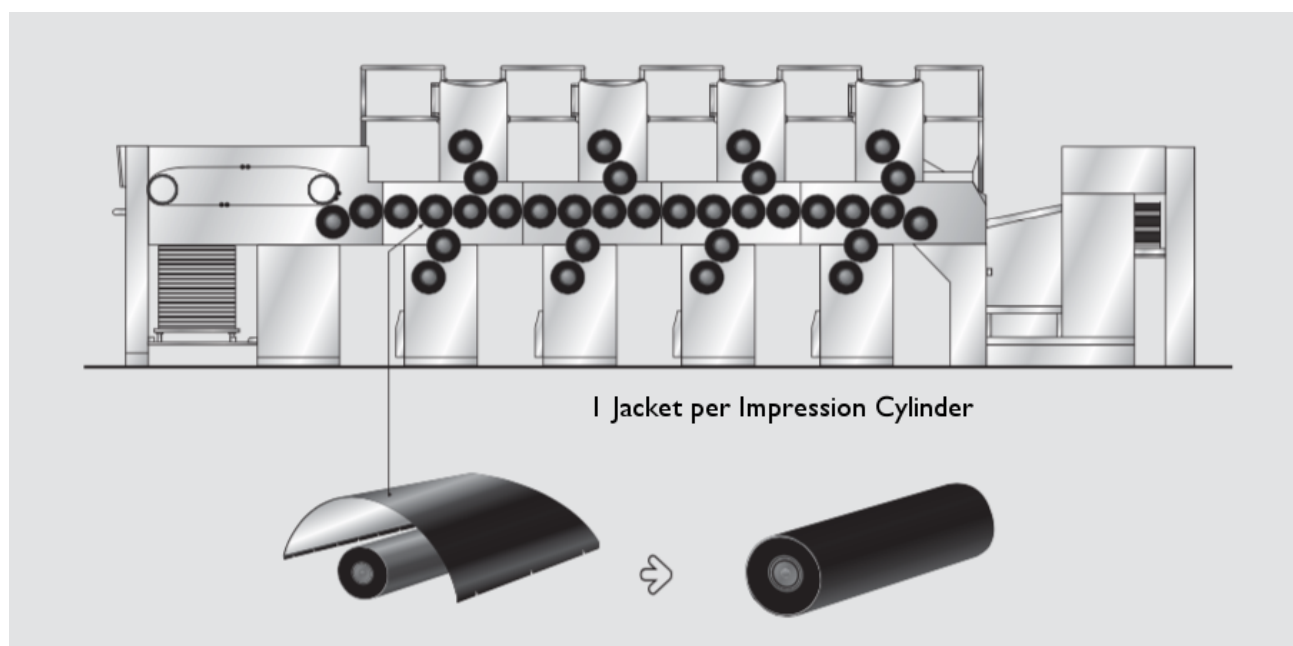
Shinohara

LMC-SH52	52	0.301-0.305	0.25
LMC-SH66	66	0.311-0.315	0.25
LMC-SH75	75	0.311-0.315	0.25

Install Example

Akiyama

JP40 Impression Jackets



LMC Jackets™



LMC Jackets™

Blueprint UK Ltd

217 Southend Road
Stanford-le-Hope
Essex SS17 7AB
UK

+44 1375 679700

sales@blueprintuk.com

www.blueprintuk.com

@BlueprintUK

Blueprint
UK LTD

